

ENT Referral Guidance: Tinnitus

Document Control

Document Attributes

Unique Identifier:	ENT/RG/Tin/01	
Classification:	Referral Guidance	
Author(s):	CHFT:	Consultant – Otolaryngology
	Calderdale CCG:	Clinician
	Greater Huddersfield CCG:	Clinician
Department:	CHFT ENT	
Approval Group:	Elective Care Improvement Group, CSG and LMC	
Status:	DRAFT	
Version No:	0.4.2	
Date of Approval:		
Last Review:		
Review Date:		
Pathway to be followed by:	Calderdale and Huddersfield NHS Foundation Trust Greater Huddersfield Clinical Commissioning Group Calderdale Clinical Commissioning Group	

Document Amendment History

Version	Date	Author Group	Nature of Change
Draft 0.1	29.09.20		Initial Document Draft
Draft 0.2	02.10.20		Guidance amended
Draft 0.3	14.10.20		Guidance amended. Red flags addressed 1st
Draft 0.4	26.10.20		All content amended
Draft 0.4.1	05.11.20		Tinnitus criteria at start amended

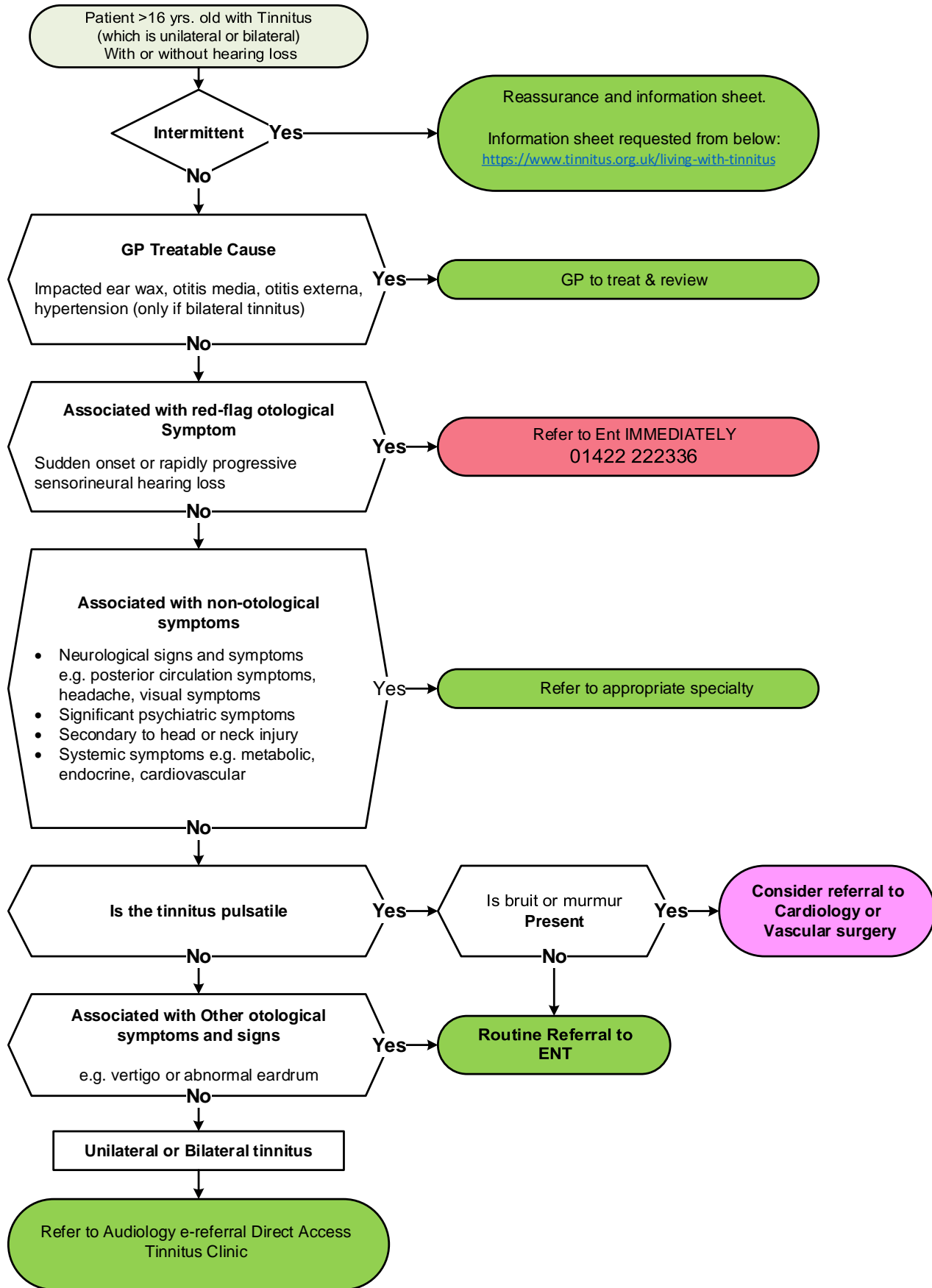
Change Approvals History

Version	Date of Issue	Name	Title	Signature

ENT Referral Guidance: Tinnitus_Draft_v0.4.2

NOTE: This document is uncontrolled once printed. Please check on CHFT Intranet site for the most up to date version

©Calderdale and Huddersfield NHS Foundation Trust



¹ Living With Tinnitus Leaflet Request - <https://www.tinnitus.org.uk/living-with-tinnitus>

² Nice Guidance - <https://www.nice.org.uk/guidance/ng155/resources/tinnitus-assessment-and-management-pdf-66141841962949>