

ENT Referral Guidance: Nasal Blockage / Discharge +/- Facial Pain in Adults

Document Control

Document Attributes

Unique Identifier:	ENT/RG/NBDFPA/03	
Classification:	Referral Guidance	
Author(s):	CHFT:	Consultant – Otolaryngology
	Calderdale CCG:	Clinician
	Greater Huddersfield CCG:	Clinician
Department:	CHFT ENT	
Approval Group:	Elective Care Improvement Group, CSG and LMC	
Status:	FINAL	
Version No:	3.0	
Date of Approval:	SEPT 2020	
Last Review:	SEPT 2020	
Review Date:	AUG 2021	
Pathway to be followed by:	Calderdale and Huddersfield NHS Foundation Trust Greater Huddersfield Clinical Commissioning Group Calderdale Clinical Commissioning Group	

Document Amendment History

Version	Date	Author Group	Nature of Change
Draft 0.1	10.08.20		Initial Document Draft
Final 1.0	11.08.20		Amended wording. Document Finalised
Final 2.0	11.08.20		Added links to NICE guidance
Final 3.0	27.09.21		Change due to recently published EBI's

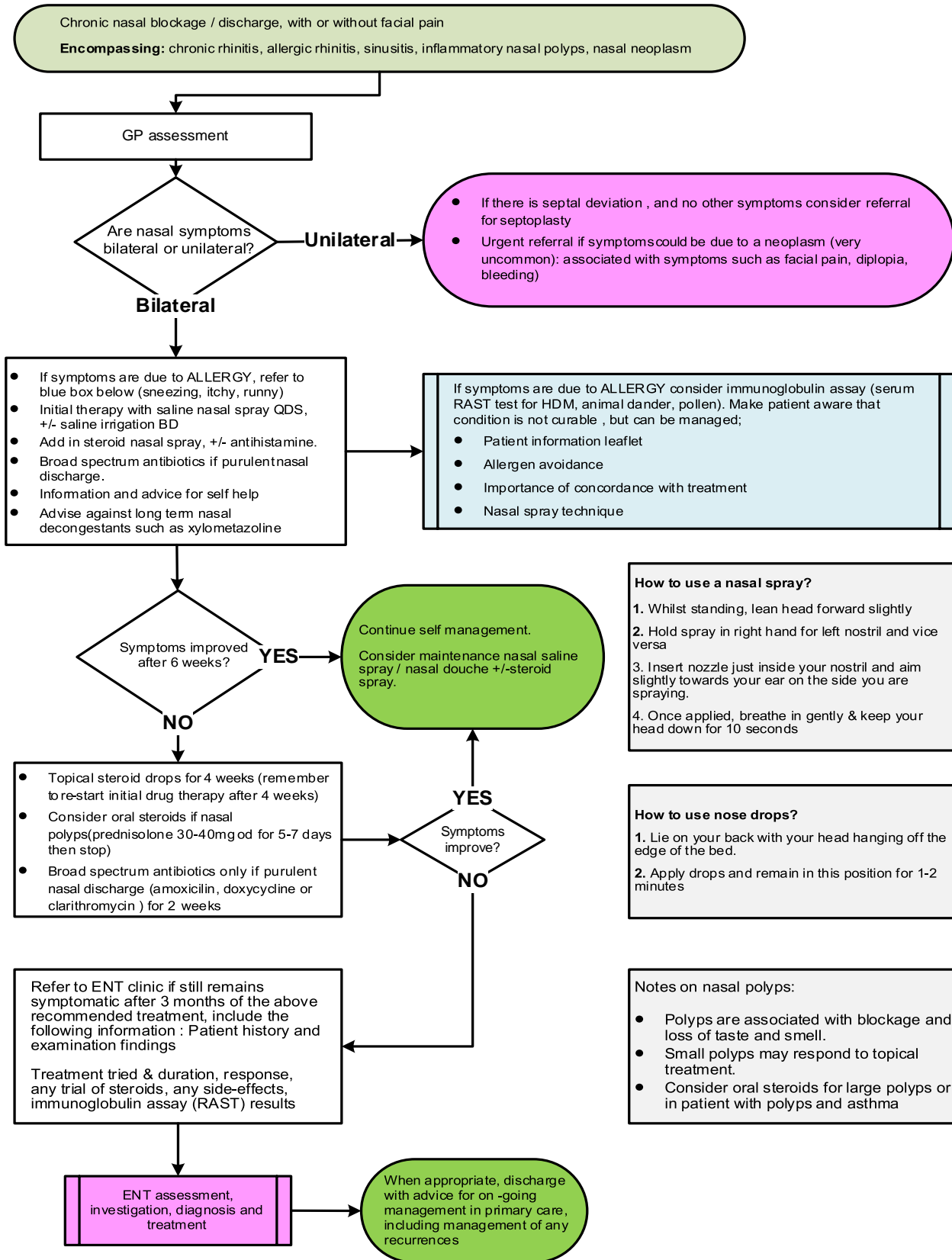
Change Approvals History

Version	Date of Issue	Name	Title	Signature

NOTE: This document is uncontrolled once printed. Please check on CHFT Intranet site for the most up to date version

©Calderdale and Huddersfield NHS Foundation Trust

1



¹ <https://cks.nice.org.uk/topics/allergic-rhinitis/>
<https://cks.nice.org.uk/topics/sinusitis/>