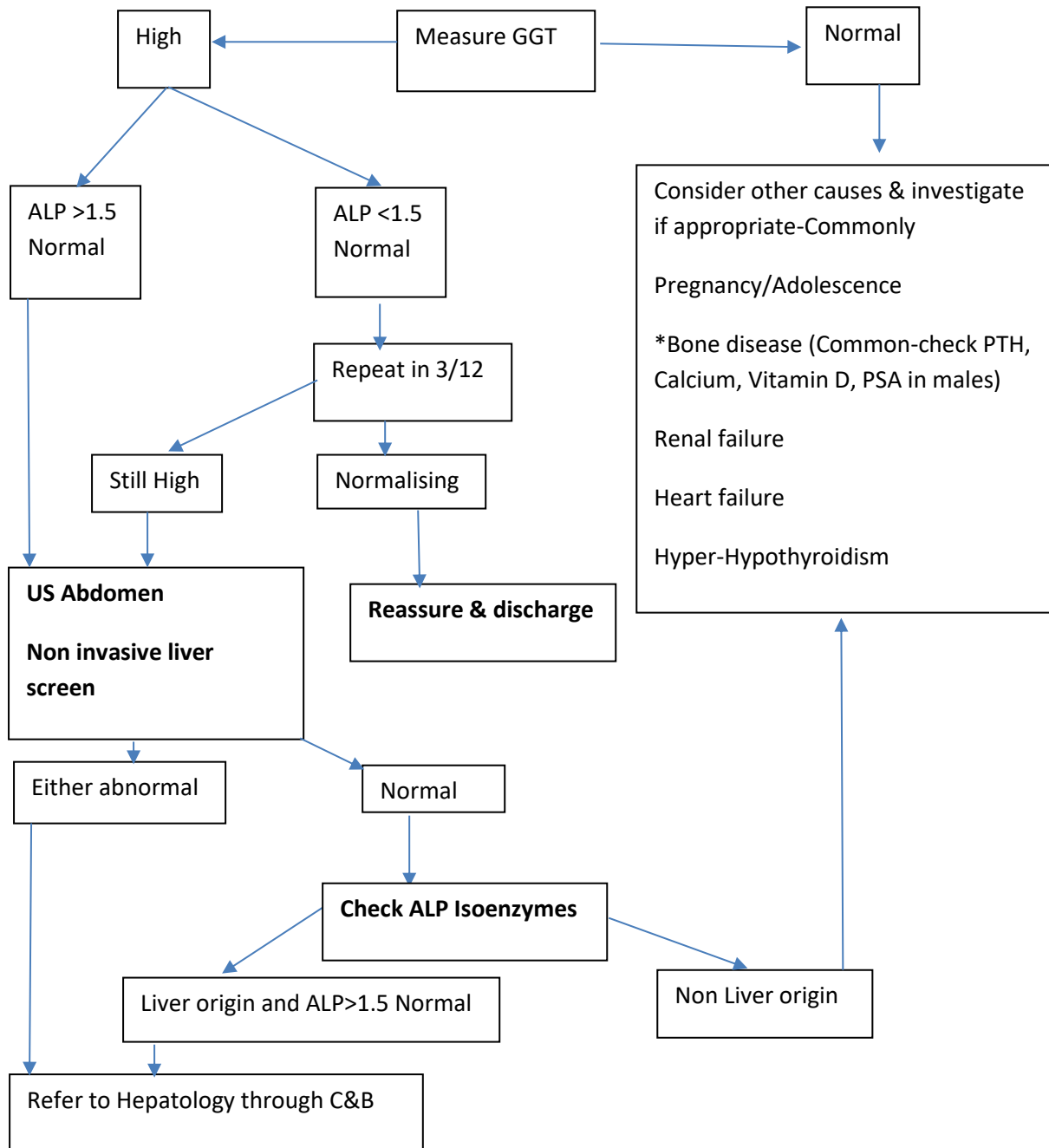


Advice and Guidance to Primary Care for **Isolated rise in Alkaline Phosphatase (ALP)** in asymptomatic patient



- If ALP isoenzymes are checked early on in the pathway in primary care & US & NILS negative & patient clinically well- Repeat ALP in 6/12 & follow the above pathway
- If patient is definitely symptomatic from a Liver perspective refer through C&B